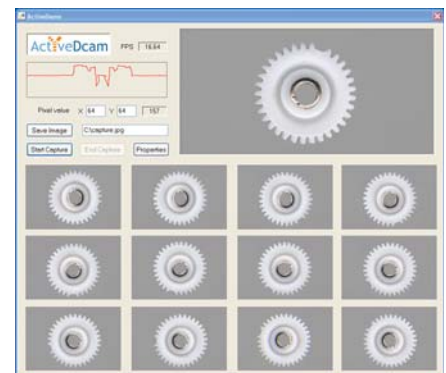


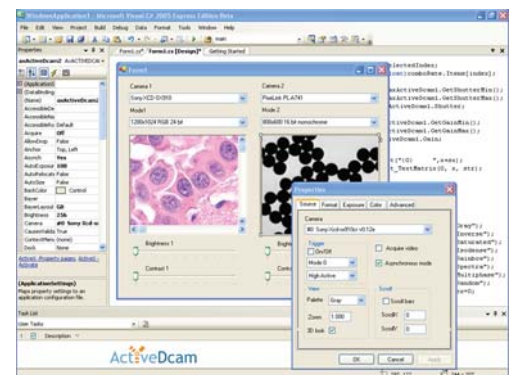
**Drag and drop ActiveDcam** onto the surface of your imaging application and get immediate support for multiple FireWire cameras!

## KEY FEATURES

- [ ] Rapid application development in VB, VB.NET, C++, C#, Java, Delphi, Matlab, Python and other popular programming environments.
- [ ] Full compatibility with IIDC 1.31 specifications, 1394a and 1394b standards.
- [ ] System drivers for Windows 98/2000/XP/Vista.
- [ ] Acquire and display live video from multiple cameras.
- [ ] Select from several hardware and software trigger modes.
- [ ] Perform automatic color interpolation of raw video from Bayer cameras.
- [ ] Select a desired size and position for regions of interest.
- [ ] Adjust multiple camera parameters in real-time.
- [ ] Control non-standard camera settings via direct access to 1394 registers.
- [ ] Choose from several palettes for pseudo-color display.
- [ ] Overlay custom graphics and text on live video.
- [ ] Save images in BMP, TIF and JPEG formats with adjustable compression; record video to AVI files.
- [ ] Real-time image flipping and rotation; anti-tearing feature.
- [ ] Built-in background (dark and flat filed) correction.
- [ ] Instant access to pixel values and arrays.
- [ ] TWAIN and DirectShow drivers for interfacing to third party applications.
- [ ] Extensive documentation and source code samples.
- [ ] Customization available upon request.



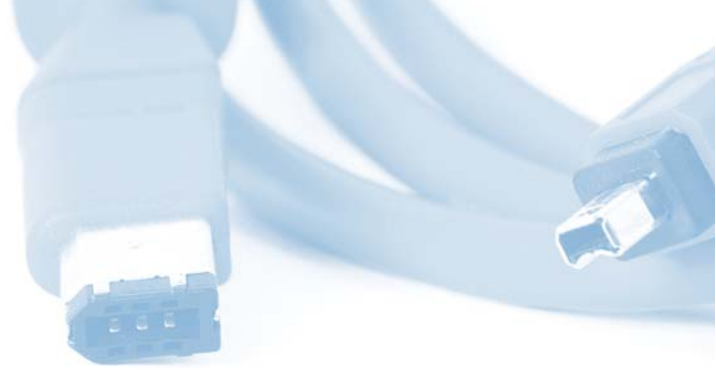
Machine Vision



Scientific Imaging

# ActiveDcam

## Camera Compatibility List\*



### Manufacturer

### Model

### License Packages

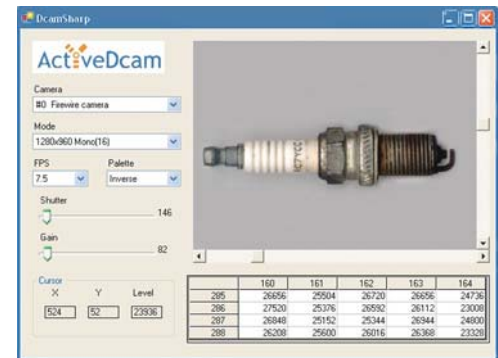
<b>1stVision</b>	MC Series
<b>Aglaia Gmbh</b>	INKA Series
<b>Allied Vision Technologies</b>	Dolphin, Guppy, Marlin, Oscar and Pike Series
<b>Basler Vision</b>	A100, A300, A600, Scout Series
<b>C-Cam Technologies</b>	BCi Series
<b>Cohu</b>	6100, 7200, 7700-3000
<b>Hamamatsu</b>	C8484-05G, C4742-95, C4742-96, C4742-98
<b>Hitachi</b>	HV-F and KP-F Series
<b>Imaging Solutions Group</b>	LW-1394 Series
<b>IMI Technology</b>	RHEIN, HAN and PEARL series
<b>JVC</b>	KY-F75U, KY-F1030
<b>Kamera Werk Dresden</b>	LOGLUX i5 FW
<b>Micro-Epsilon</b>	LLT2800 (laser-line profile sensor)
<b>Net Electronic Technology</b>	FOculus IEEE1394 series
<b>Optronics</b>	MicroFire, MacroFire, QuantiFire
<b>Philips Applied Technologies</b>	Dica 121, Inca 311, Inca 321
<b>PixeLink</b>	PL-A and PL-B Series
<b>Point Grey Research</b>	Dragonfly, Firefly, Flea, Scorpion
<b>Prosilica</b>	CV and EC Series
<b>Redlake</b>	MegaPlus II ES and EC Series
<b>Sony</b>	DFW and XCD Series
<b>Toshiba Teli</b>	CSB1100F, CSB4000F, CS8581QF, CSF5M3L18NR, FireDragon Series
<b>Unibrain</b>	Fire-i, Fire-i 400
<b>VDS Vosskuhler</b>	CCD Series
<b>Videre Design</b>	DCSG and MDCS2 Series

### ActiveDcam 2.0 Full

Available as a Developer License (includes 2 runtime licenses) or a Developer Team License (includes 10 runtime licenses)

### ActiveDcam 2.0 Runtime

Available in single licenses or volume license packages



### A&B Software

New London, CT  
USA

TEL: 1-860-823-8301

FAX: 1-860-777-2506

EMAIL: [info@ab-soft.com](mailto:info@ab-soft.com)

WEB: [www.activedcam.com](http://www.activedcam.com)

\* ActiveDcam will work with any FireWire camera that complies with Version 1.30 and 1.31 IIDC-1394 specifications. If your camera is not on this list, please contact us or your camera manufacturer.