

# ActiveGig

## GigE Vision™ camera SDK



>>> **Drag and drop ActiveGig** onto the surface of your imaging application and get immediate support for multiple GigE Vision™ cameras!

### KEY FEATURES

- o Acquire and display live video from one or several GigE Vision™ cameras.
- o Select among multiple camera sources.
- o Set the desired video format and triggering mode.
- o Grab 8-, 10-, 12- or 16-bit per channel monochrome and color images.
- o Perform automatic color interpolation of a monochrome video generated by Bayer cameras.
- o Choose the desired frame rate.
- o Select the desired size and position of the scan area.
- o Flip and rotate the live image.
- o Adjust multiple camera features in real time.
- o Control non-standard camera features by direct access to camera registers.
- o Choose among several palettes for pseudo-color display.
- o Get an instant access to pixel values and pixel arrays.
- o Retrieve individual color planes from RGB images.
- o Perform image processing on incoming video and display it in real time.
- o Save images in BMP, TIFF and JPEG formats.
- o Perform time-lapse capture to AVI files and image sequences.
- o Interface to third party imaging applications through the TWAIN and DirectShow drivers.
- o Customization available upon request.

Traffic



Surveillance



Scientific



Machine Vision



# ActiveGig



## License Packages

### ActiveGigE Full

Available as a Developer License (includes 2 runtime licenses) or a Developer Team License (includes 10 runtime licenses).

### ActiveGigE Runtime

Available in single licenses or volume license packages.

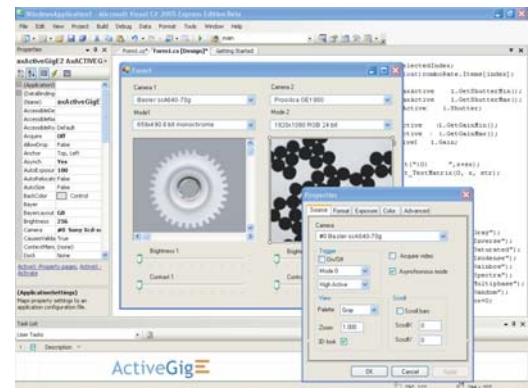
Active GigE is an ActiveX SDK designed to provide developers with a rapid access to GigE Vision™ (Gigabit Ethernet) digital cameras. Just drop an ActiveGigE control onto the surface of your application and have it immediately support multiple GigE Vision™ cameras. With ActiveGigE your application does not have to rely on a specific camera model - any GigE Vision™ compliant camera will work out-of-the-box in any popular development environment, such as Visual Studio, Visual Basic (VB), Delphi, PowerBuilder, Java, Matlab, Python.

ActiveGigE setup includes extensive documentation and source code samples for all supported development environments demonstrating live video capture, image processing and analysis, storing acquired images in different formats, full control over camera settings, and many more.

## Camera Compatibility List\*

<b>AVT</b>	Prosilica GB/GC/GE/GS/GX Series
<b>Basler Vision</b>	Pilot, Runner and Scout Series
<b>Baumer Optronic</b>	TXG Series
<b>DALSA</b>	Genie Series
<b>FLIR Systems</b>	ThermoVision A320G
<b>Gevicam</b>	GP Series
<b>GigaLinX</b>	GigE-Connect products
<b>Hitachi</b>	KP-F **GV and HV-F **GV series
<b>IMI Technology</b>	Amazon Series
<b>Imperx</b>	Lynx IPX GigE Series
<b>JAI</b>	All GigE Vision models
<b>Net GmbH</b>	GimaGo Series
<b>Photonfocus</b>	MV1-D1312(I)-***-GB Series
<b>PixeLINK</b>	PL-***G Gigabit Ethernet Seires
<b>Pleora Technologies</b>	iPORT digital and analog IP Engines
<b>Sensor to Image</b>	FPGA GigE IP Engines
<b>Sony</b>	XCG Series
<b>Tattile</b>	LARA and TAG Series
<b>Toshiba Teli</b>	GiantDragon Series

\* ActiveGigE will work with any GigE Vision™ compliant camera  
If your camera is not on this list please contact us or your camera manufacturer.



A&B Software is a leading provider of advanced products and services for the industrial and scientific imaging marketplaces.

Our ActiveBF, ActiveDcam, ActiveGigE and ImageWarp software products are used in a wide variety of application areas including industrial automation, metrology, life science, X-ray inspection, food processing, aerospace, geology, traffic and security.



New London, CT USA  
TEL: 1-860-823-8301  
FAX: 1-860-777-2506